

PROJECT SCHEDULE

SIGN TYPE/ DESCRIPTION:	QTY.:	PG.
A. NON-ILLUM. DIMN. LOGO TYPE ID.	ONE (1)	4
B. NON-ILLUM. DIMN. HOTEL TYPE.	ONE (1)	5
C. D/S MONUMENT SIGN w/ PUSH-THRU ILLUM. LOGO TYPE ID.	ONE (1)	7

PROJECT:



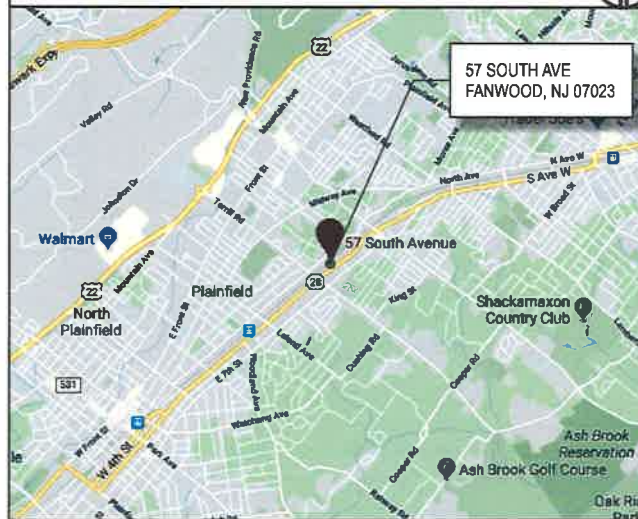
K9 RESORTS

57 SOUTH AVE
FANWOOD, NJ 07023

REVISIONS

#	DATE	DB	NOTES
R1	2/13/2020	JS	R1- REV. PER COMMENTS.
R2	2/18/2020	JS	R2- REV. MONUMENT DIMNS.

AREA MAP



SITE MAP



TRIANGLE
SIGN SERVICES

11 Azar Court • P.O. Box 24186
Baltimore, Maryland 21227
T: 410-247-5300 • F: 410-247-1944
Reproduction In Whole or Part
Prohibited without Express
Permission of Triangle S & S © TSS

CLIENT & LOCATION



K9 RESORTS

57 SOUTH AVE
FANWOOD, NJ 07023

LEAD NO.	DATE	REVIEWED BY	SHEET NO
190090-R2	2/11/2020		1 of 8
SM - PM	DRAWN BY	SEG. NO.	
ZF	JS		



REMOVE EXISTING PIN-MNTD. NON-ILLUM. DIMN. TYPE. PATCH & REPAIR SIGN BAND TO LIKE NEW CONDITION.
WALL COLOR: SW 6364 EGGWHITE.

EXISTING FRONT ELEVATION SCALE: N.T.S. 1.2



SIGN A NON-ILLUM. DIMN. LOGO TYPE ID.

SIGN B NON-ILLUM. DIMN. HOTEL TYPE.

PROPOSED FRONT ELEVATION @ SOUTH AVE SCALE: 1/8"=1'-0" 1.1

TRIANGLE
SIGN SERVICES

11 Azar Court • P.O. Box 24186
Baltimore, Maryland 21227
T: 410-247-5300 • F: 410 247-1944
Reproduction In Whole or Part
Prohibited without Express
Permission of Triangle S & S © TSS

CLIENT & LOCATION



K9 RESORTS

57 SOUTH AVE
FANWOOD, NJ 07023

LEAD NO.
190090-R2

DATE
2/11/2020

REVIEWED BY

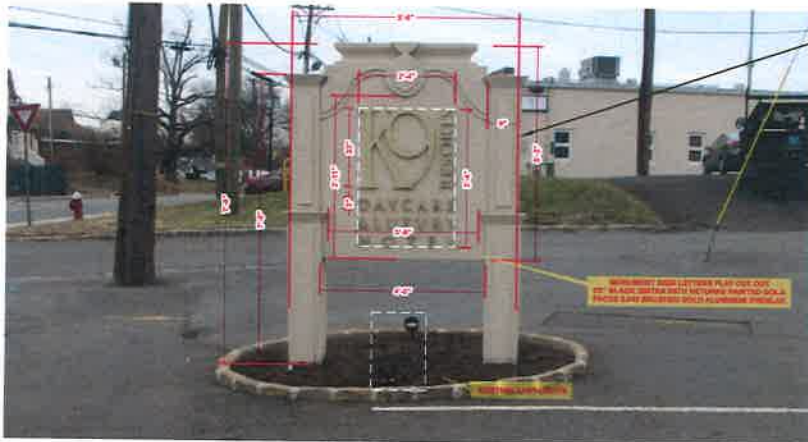
SHEET NO.

SM - PM
ZF

DRAWN BY
JS

SEG. NO.

2 of 8



REMOVE EXISTING NON-ILLUM. D/S
PYLON SIGN & GROUND LIGHTING.

EXISTING PYLON ELEVATION (2.2)
SCALE: 1/4"=1'-0"



PROPOSED PYLON ELEVATION (2.1)
SCALE: 3/8"=1'-0"

TRIANGLE
SIGN SERVICES

11 Azar Court • P.O. Box 24186
Baltimore, Maryland 21227
T: 410-247-5300 • F: 410 247-1944

Reproduction in Whole or Part
Prohibited without Express
Permission of Triangle S & S © TSS

CLIENT & LOCATION



K9 RESORTS

57 SOUTH AVE
FANWOOD, NJ 07023

LEAD NO.
190090-R2

SM - PM
ZF

DATE
2/11/2020

DRAWN BY
JS

REVIEWED BY

SEG. NO.

SHEET NO.

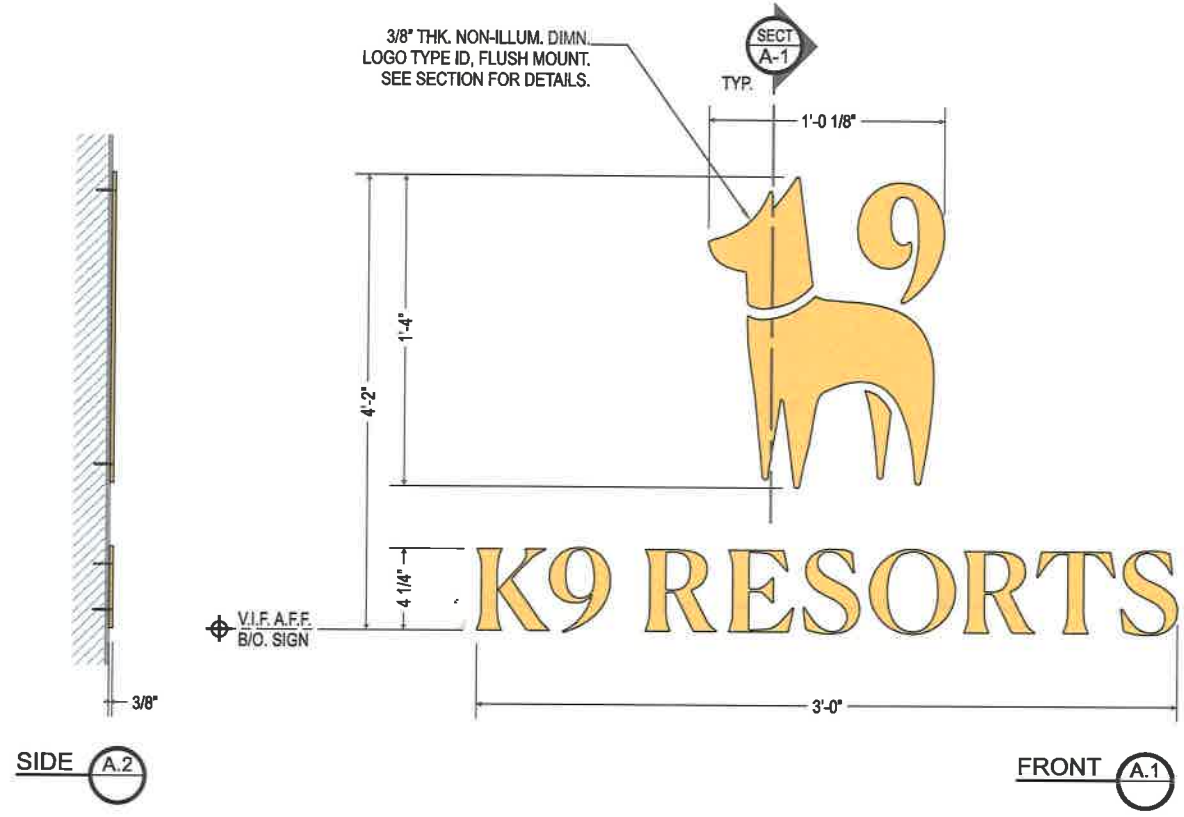
3 of 8



FLUSH MOUNT DIMN. LOGO TYPE ID A

SCALE: 3/4"=1'-0"
 QTY.: ONE (1)
 AREA: 50" x 76.5" = 26.563' ²

3/8" THK. NON-ILLUM. DIMN.
 LOGO TYPE ID, FLUSH MOUNT.
 SEE SECTION FOR DETAILS.



TRIANGLE
SIGN SERVICES

11 Azar Court • P.O. Box 24186
 Baltimore, Maryland 21227
 T: 410-247-5300 • F: 410 247-1944
 Reproduction in Whole or Part
 Prohibited without Express
 Permission of Triangle S & S © TSS

CLIENT & LOCATION



K9 RESORTS

57 SOUTH AVE
 FANWOOD, NJ 07023

LEAD NO. 190090-R2	DATE 2/11/2020	REVIEWED BY	SHEET NO. 4 of 8
SM - PM ZF	DRAWN BY JS	SEG. NO.	

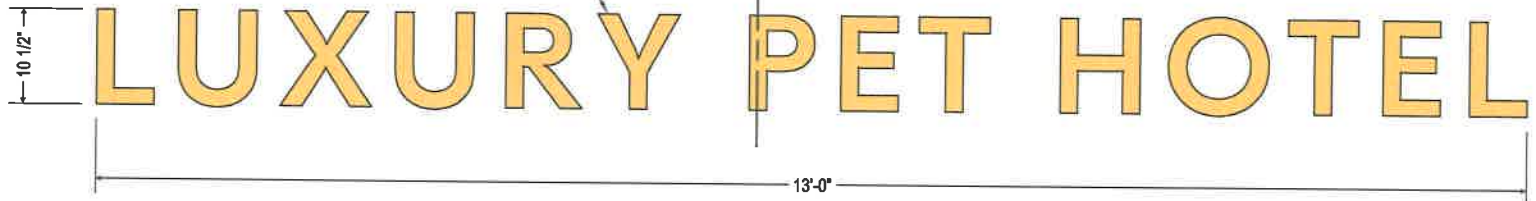


FLUSH MOUNT DIMN. HOTEL TYPE B
 SCALE: 3/4"=1'-0"
 QTY.: ONE (1)
 AREA: 10.5' x 156" = 11.375' \sphericalangle

3/8" THK. NON-ILLUM. DIMN.
 HOTEL TYPE, FLUSH MOUNT.
 SEE SECTION FOR DETAILS.



SIDE B.2



FRONT B.1

TRIANGLE
SIGN SERVICES

11 Azar Court • P.O. Box 24186
 Baltimore, Maryland 21227
 T: 410-247-5300 • F: 410 247-1944
 Reproduction in Whole or Part
 Prohibited without Express
 Permission of Triangle S & S © TSS

CLIENT & LOCATION



K9 RESORTS

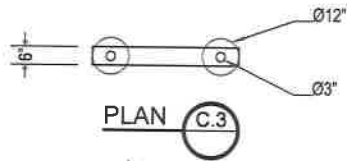
57 SOUTH AVE
 FANWOOD, NJ 07023

LEAD NO.
190090-R2
SM - PM
ZF

DATE
2/11/2020
DRAWN BY
JS

REVIEWED BY
SEG. NO.

SHEET NO.
5 of 8

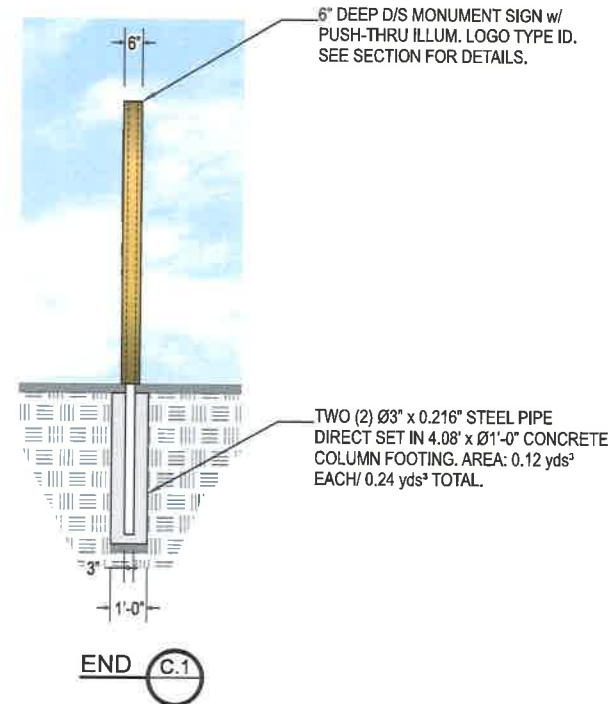
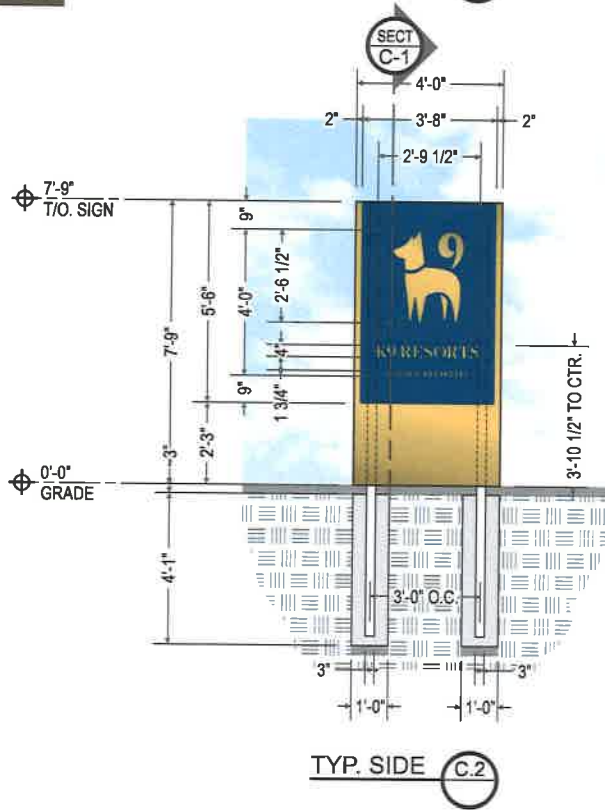


D/S MONUMENT SIGN w/ PUSH-THRU ILLUM. LOGO TYPE ID C

SCALE: 1/4"=1'-0"

QTY.: ONE (1)

AREA: 93" x 48" = 31' 0"



TRIANGLE
SIGN SERVICES

11 Azar Court • P.O. Box 24186
Baltimore, Maryland 21227
T: 410-247-5300 • F: 410 247-1944

Reproduction In Whole or Part
Prohibited without Express
Permission of Triangle S & S © TSS

CLIENT & LOCATION



K9 RESORTS

57 SOUTH AVE
FANWOOD, NJ 07023

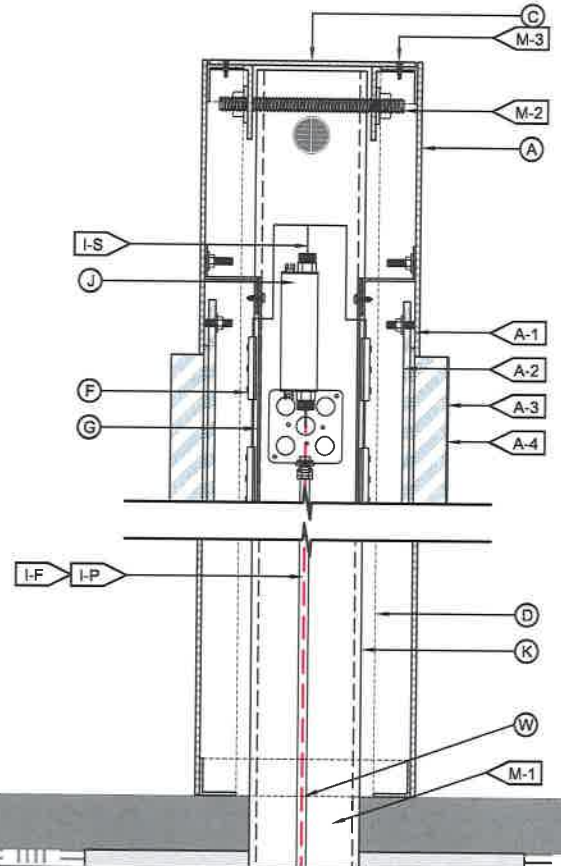
LEAD NO.
190090-R2
SM - PM
ZF

DATE
2/11/2020
DRAWN BY
JS

REVIEWED BY
SEG. NO.

SHEET NO.
7 of 8

TYP. D/S MONUMENT SIGN w/ PUSH-THRU ILLUM. LOGO TYPE ID SECTION DETAIL C-1
 SCALE: 3"=1'-0"



(A) FACE	
MATERIAL:	1/8" ALUM. w/ CUT-OUT LOGO TYPE.
COLOR/ FINISH:	GOLD TO MATCH PMS #871 C/ METALLIC. BLUE AREA TO MATCH PMS #654 C/ SATIN.
A-1: MNTG.	WELDED 10-24 STUD & NUT.
A-2: BACK-UP	3/16" #2447 TRANSLUCENT WHITE ACRYLIC.
A-3: PUSH-THRU	3/4" TRANSLUCENT CLEAR ACRYLIC w/ 1/8" KERF EDGE.
A-4: VINYL	1st SURFACE ADHESIVE VINYL FILM. APPLY @ FACE.
COLOR:	3M SCOTCHCAL 3630-131 GOLD METALLIC TRANSLUCENT.
(C) RETURN	
DEPTH:	6" DEEP O.A.
MATERIAL:	-0.080" ALUM., REMOVABLE TOP FOR INSTALL.
COLOR/ FINISH:	GOLD TO MATCH PMS #871 C/ METALLIC.
(D) FRAME	
MATERIAL:	1 1/2" x 1 1/2" ALUM. ANGLE FRAME.
(F) ILLUMINATION	
TYPE:	6500°K WHITE LEDS. SEE FABRICATOR NOTE.
(E) BAFFLE	
MATERIAL:	0.040" PRE-COAT WHITE ALUM.

(1) WIRING	
I-F: FEED	SEE ELEC. NOTE. 120V PRIMARY IN J-BOX BY OTHERS.
I-P: PRIMARY	12awg FEED IN Ø1/2" SEAL-TITE w/ CONNECTORS.
I-S: SECONDARY	U.L. APPROVED CLASS II LOW VOLTAGE WIRE.
I-D: DISCONNECT	120V DISCONNECT SWITCH. LOCATION T.B.D.
(J) POWER SUPPLY	
TYPE:	INTERNAL LED POWER SUPPLY HOUSED IN SIGN.
	TYP. J-BOX TO HOUSE ELEC. CONNECTION TO PRIMARY.
VOLTAGE:	120V.
(K) POLE SUPPORT	
MATERIAL:	TWO (2) 16' x Ø3" x 0.216" STEEL PIPE DIRECT SET IN 5.15' x Ø1'-0" CONCRETE COLUMN FOOTING. AREA: 0.16 yds² EACH/ 0.32 yds² TOTAL.
(M) MOUNTING	
M-1:	SEE INSTALLATION NOTE.
M-2:	Ø3/8" BOLT, NUT & WASHERS THRU ALUM. ANGLE POLE POCKET.
M-3:	FLUSH FITTING Ø1/8" MECH. FASTENER. FINISH TO MATCH.
(W) WATER DRAIN'G.	
TYPE:	OPEN BOTTOM/ DRAINAGE @ B/O. SIGN TO GRADE/ EARTH.

120V
INSTALL

- CUSTOMER G.C. TO PROVIDE ADEQUATE WOOD OR MTL. BLOCKING IN CORRELATION W/ FACADE FRAMING AS REQUIRED.
- INSTALLER IS TO V.I.F. & PROVIDE THE PROPER NON-CORROSIVE MOUNTING HARDWARE TO ENSURE SAFE INSTALLATION.
- ALL EXTERIOR FACADE PENETRATIONS TO BE WATERTIGHT.
- INSTALLATION TO MEET CURRENT N.E.C., U.L. & LOCAL CODES. LOCATION OF THE DISCONNECT SWITCH AFTER INSTALLATION SHALL COMPLY WITH ARTICLE 600.6(A) (1) OF THE NATION ELECTRICAL CODE

ELECTRICAL

- ALL ELECTRICAL COMPONENTS TO BE U.L. APPROVED.
- CUSTOMER IS RESPONSIBLE FOR ONE (1) 120v/ 20a DEDICATED CIRCUIT w/ GROUND PER SIGN TO WITHIN 6' OF SIGN.
- THIS SIGN IS INTENDED TO BE INSTALLED IN ACCORDING W/ THE REQUIREMENTS OF ARTICLE 600 OF THE NATIONAL ELECTRICAL CODE AND/OR OTHER APPLICABLE LOCAL CODES. THIS INCLUDES PROPER GROUNDING & BONDING OF THE SIGN.

FABRICATOR

- PLACEMENT OF LIGHTING ELEMENTS FOR OPTIMUM ILLUMINATION OF SIGN TO BE DETERMINED IN PRODUCTION.
- MANUFACTURER & U.L. LABELS TO BE APPLIED & VISIBLE FROM THE GROUND. LOCATED ON THE LAST CHANNEL LETTER OR END OF THE SIGN BOX/FREESTANDING SIGN



TRIANGLE
SIGN SERVICES

11 Azar Court • P.O. Box 24186
Baltimore, Maryland 21227
T: 410-247-5300 • F: 410 247-1944
Reproduction In Whole or Part
Prohibited without Express
Permission of Triangle S & S © TSS

CLIENT & LOCATION
 K9 RESORTS
57 SOUTH AVE
FANWOOD, NJ 07023

LEAD NO. 190090-R2	DATE 2/11/2020	REVIEWED BY	SHEET NO. 8 of 8
SM - PM ZF	DRAWN BY JS	SEG. NO.	

PROJECT SCHEDULE

SIGN TYPE/ DESCRIPTION:	QTY.:	PG.
A. D/S MONUMENT SIGN w/ PUSH-THRU ILLUM. LOGO TYPE ID.	ONE (1)	3

PROJECT:



K9 RESORTS

43 SOUTH AVE
FANWOOD, NJ 07023

REVISIONS

#	DATE	DB	NOTES
R1	2/14/2020	JS	R1- REV. PER COMMENTS.
R2	2/18/2020	JS	R2- REV. MONUMENT DIMNS.

AREA MAP



SITE MAP



TRIANGLE
SIGN SERVICES

11 Azar Court • P.O. Box 24186
Baltimore, Maryland 21227
T: 410-247-5300 • F: 410 247-1944

Reproduction In Whole or Part
Prohibited without Express
Permission of Triangle S & S © TSS

CLIENT & LOCATION



K9 RESORTS

43 SOUTH AVE
FANWOOD, NJ 07023

LEAD NO.

189929-R2

SM - PM

ZF

DATE

2/13/2020

DRAWN BY

JS

REVIEWED BY

SEG. NO.

SHEET NO.

1 of 4



PROPOSED MONUMENT ELEVATION 1.2
SCALE: -3/8"=1'-0"



PROPOSED MONUMENT ELEVATION 1.1
SCALE: -3/8"=1'-0"

TRIANGLE
SIGN SERVICES

11 Azar Court • P.O. Box 24186
Baltimore, Maryland 21227
T: 410-247-5300 • F: 410 247-1944
Reproduction in Whole or Part
Prohibited without Express
Permission of Triangle S & S © TSS

CLIENT & LOCATION



K9 RESORTS

43 SOUTH AVE
FANWOOD, NJ 07023

LEAD NO.
189929-R2

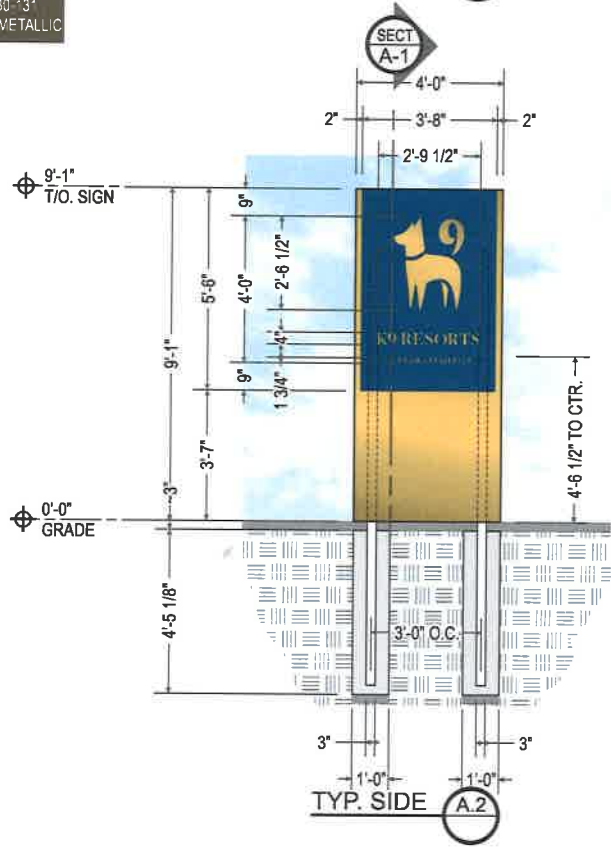
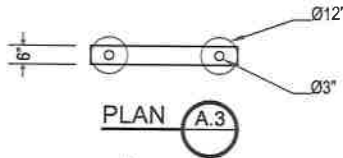
SM - PM
ZF

DATE
2/13/2020

DRAWN BY
JS

REVIEWED BY
SEG. NO.

SHEET NO.
2 of 4

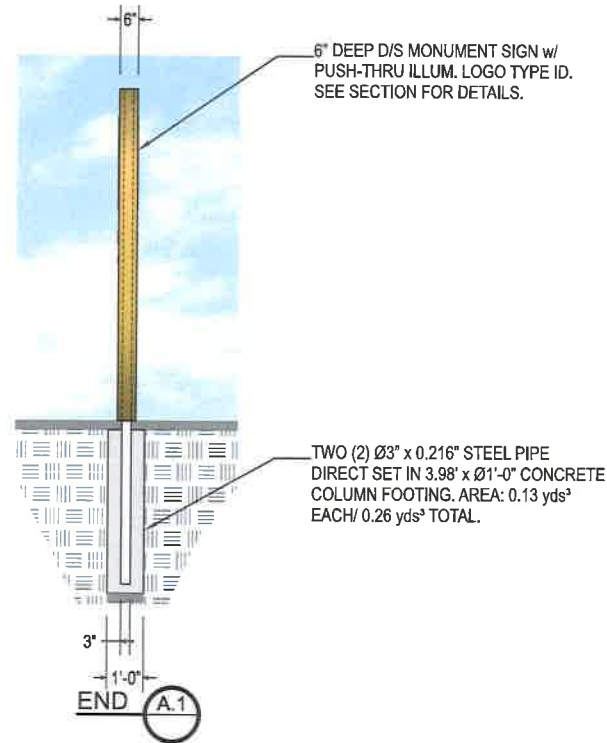


D/S MONUMENT SIGN w/ PUSH-THRU ILLUM. LOGO TYPE ID A

SCALE: 1/4"=1'-0"

QTY.: ONE (1)

AREA: 89' x 48' = 29.667' ²



6" DEEP D/S MONUMENT SIGN w/
PUSH-THRU ILLUM. LOGO TYPE ID.
SEE SECTION FOR DETAILS.

TWO (2) Ø3" x 0.216" STEEL PIPE
DIRECT SET IN 3.98' x Ø1'-0" CONCRETE
COLUMN FOOTING. AREA: 0.13 yds³
EACH/ 0.26 yds³ TOTAL.

TRIANGLE
SIGN SERVICES

11 Azar Court • P.O. Box 24186
Baltimore, Maryland 21227
T: 410-247-5300 • F: 410 247-1944

Reproduction in Whole or Part
Prohibited without Express
Permission of Triangle S & S © TSS

CLIENT & LOCATION



K9 RESORTS

43 SOUTH AVE
FANWOOD, NJ 07023

LEAD NO.
189929-R2
SM - PM
ZF

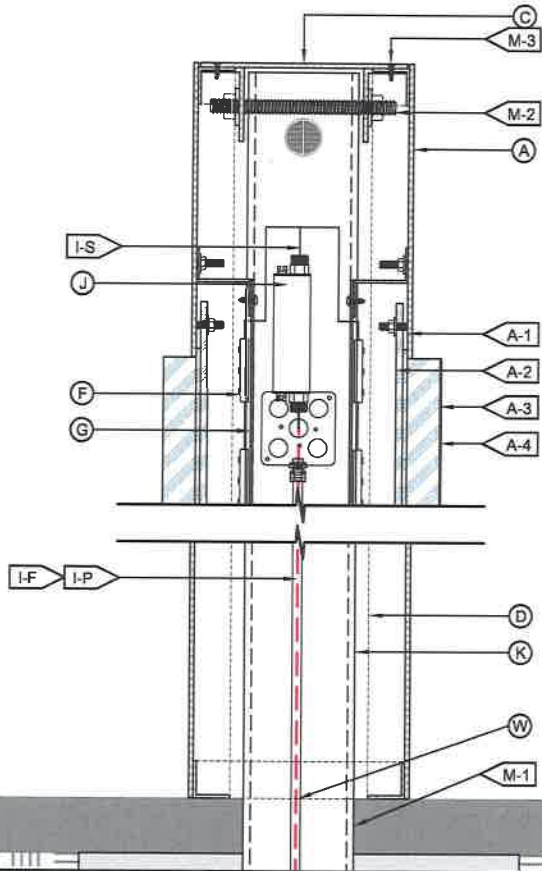
DATE
2/13/2020
DRAWN BY
JS

REVIEWED BY
SEG. NO.

SHEET NO.
3 of 4

TYP. D/S MONUMENT SIGN w/ PUSH-THRU ILLUM. LOGO TYPE ID SECTION DETAIL (A-1)

SCALE: 3"=1'-0"



(A) FACE	
MATERIAL:	1/8" ALUM. w/ CUT-OUT LOGO TYPE.
COLOR/ FINISH:	GOLD TO MATCH PMS #871 C/ METALLIC. BLUE AREA TO MATCH PMS #654 C/ SATIN.
A-1: MNTG.	WELDED 10-24 STUD & NUT.
A-2: BACK-UP	3/16" #2447 TRANSLUCENT WHITE ACRYLIC.
A-3: PUSH-THRU	3/4" TRANSLUCENT CLEAR ACRYLIC w/ 1/8" KERF EDGE.
A-4: VINYL	1st SURFACE ADHESIVE VINYL FILM. APPLY @ FACE.
COLOR:	3M SCOTCHCAL 3630-131 GOLD METALLIC TRANSLUCENT.
(C) RETURN	
DEPTH:	6" DEEP O.A.
MATERIAL:	~0.080" ALUM., REMOVABLE TOP FOR INSTALL.
COLOR/ FINISH:	GOLD TO MATCH PMS #871 C/ METALLIC.
(D) FRAME	
MATERIAL:	1 1/2" x 1 1/2" ALUM. ANGLE FRAME.
(F) ILLUMINATION	
TYPE:	6500°K WHITE LEDS. SEE FABRICATOR NOTE.
(E) BAFFLE	
MATERIAL:	0.040" PRE-COAT WHITE ALUM.

(I) WIRING	
I-F: FEED	SEE ELEC. NOTE. 120V PRIMARY IN J-BOX BY OTHERS.
I-P: PRIMARY	12awg FEED IN Ø1/2" SEAL-TITE w/ CONNECTORS.
I-S: SECONDARY	U.L. APPROVED CLASS II LOW VOLTAGE WIRE.
I-D: DISCONNECT	120V DISCONNECT SWITCH. LOCATION T.B.D.
(J) POWER SUPPLY	
TYPE:	INTERNAL LED POWER SUPPLY HOUSED IN SIGN.
	TYP. J-BOX TO HOUSE ELEC. CONNECTION TO PRIMARY.
VOLTAGE:	120V.
(K) POLE SUPPORT	
MATERIAL:	TWO (2) Ø3" x 0.216" STEEL PIPE DIRECT SET IN 3.98' x Ø1'-0" CONCRETE COLUMN FOOTING. AREA: 0.13 yds² EACH/ 0.26 yds² TOTAL.
(M) MOUNTING	
M-1:	SEE INSTALLATION NOTE.
M-2:	Ø3/8" BOLT, NUT & WASHERS THRU ALUM. ANGLE POLE POCKET.
M-3:	FLUSH FITTING Ø1/8" MECH. FASTENER. FINISH TO MATCH.
(W) WATER DRAIN'G.	
TYPE:	OPEN BOTTOM/ DRAINAGE @ B/O. SIGN TO GRADE/ EARTH.

120V

INSTALL

- CUSTOMER G.C. TO PROVIDE ADEQUATE WOOD OR MTL. BLOCKING IN CORRELATION W/ FACADE FRAMING AS REQUIRED.
- INSTALLER IS TO V.I.F. & PROVIDE THE PROPER NON-CORROSIVE MOUNTING HARDWARE TO ENSURE SAFE INSTALLATION.
- ALL EXTERIOR FACADE PENETRATIONS TO BE WATERTIGHT.
- INSTALLATION TO MEET CURRENT N.E.C., U.L. & LOCAL CODES. LOCATION OF THE DISCONNECT SWITCH AFTER INSTALLATION SHALL COMPLY WITH ARTICLE 600.6(A) (1) OF THE NATIONAL ELECTRICAL CODE

ELECTRICAL

- ALL ELECTRICAL COMPONENTS TO BE U.L. APPROVED.
- CUSTOMER IS RESPONSIBLE FOR ONE (1) 120v/ 20a DEDICATED CIRCUIT w/ GROUND PER SIGN TO WITHIN 6' OF SIGN.
- THIS SIGN IS INTENDED TO BE INSTALLED IN ACCORDING W/ THE REQUIREMENTS OF ARTICLE 600 OF THE NATIONAL ELECTRICAL CODE AND/OR OTHER APPLICABLE LOCAL CODES. THIS INCLUDES PROPER GROUNDING & BONDING OF THE SIGN.

FABRICATOR

- PLACEMENT OF LIGHTING ELEMENTS FOR OPTIMUM ILLUMINATION OF SIGN TO BE DETERMINED IN PRODUCTION.
- MANUFACTURER & U.L. LABELS TO BE APPLIED & VISIBLE FROM THE GROUND. LOCATED ON THE LAST CHANNEL LETTER OR END OF THE SIGN BOX/FREESTANDING SIGN



ALL ELECTRICAL COMPONENTS ARE TO BE UL APPROVED

TRIANGLE
SIGN SERVICES

11 Azar Court • P.O. Box 24186
Baltimore, Maryland 21227
T: 410-247-5300 • F: 410 247-1944

Reproduction in Whole or Part
Prohibited without Express
Permission of Triangle S & S © TSS

CLIENT & LOCATION



K9 RESORTS

43 SOUTH AVE
FANWOOD, NJ 07023

LEAD NO. 189929-R2	DATE 2/13/2020	REVIEWED BY	SHEET NO.
SM - PM ZF	DRAWN BY JS	SEG. NO.	4 of 4